

## Dcp\_copy.exe File Maintenance Utility Program

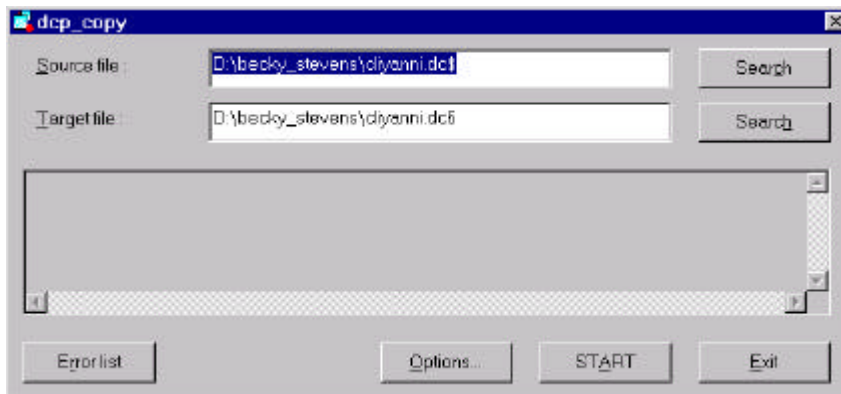
You can use the Dcp\_copy utility tool to recover a corrupted drawing file or to release excess memory space in a drawing file that has undergone extensive editing.

Corrupted drawing files are usually caused by power or hardware failure. When a drawing file is corrupted, information is distorted or cannot be accessed. Dcp\_copy recovers unaffected data and helps you rebuild the drawing file.

Excess memory space in a drawing file results when you extensively add and/or delete entities or groups. Whenever you add entities or groups, a drawing's file size increases; however, it is not reduced when you delete them. The drawing file retains the memory space released when you delete entities or groups and makes it available to the system. The result is a file with potentially large amounts of unused memory. Dcp\_copy releases this memory to the rest of the system.

### Using Dcp\_copy

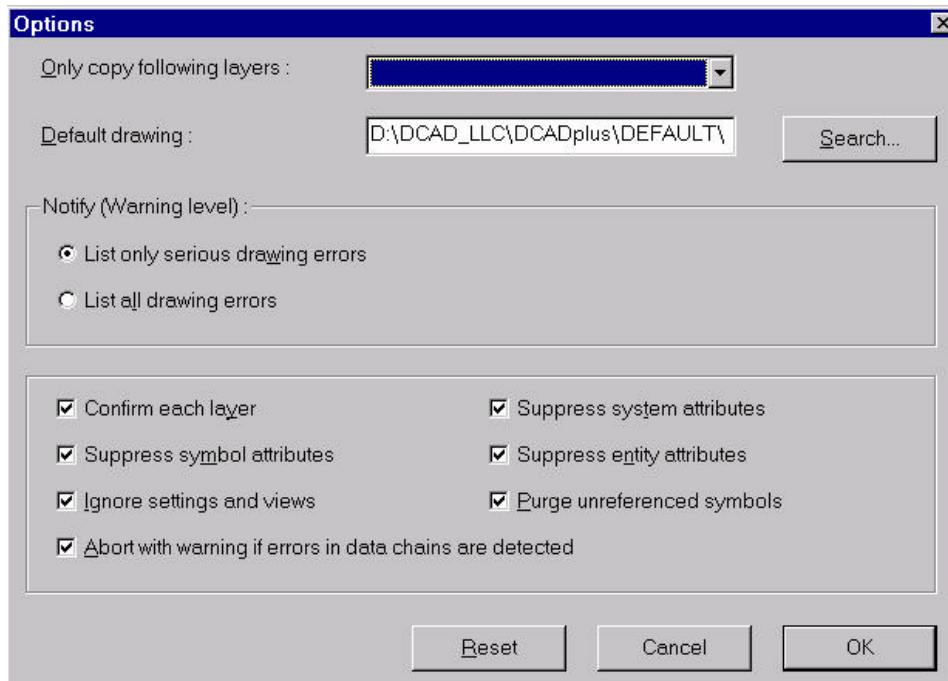
1. Double-click on the file Dcp\_copy.exe in the DCAD\_LLC\DCADplus\BIN folder. You can also launch Dcp\_copy.exe using an icon within DataCAD Plus. The dcp\_copy dialog box appears.



2. Select the Options... button and choose Reset. This reinstates the default program settings. (Other options are described in another portion of this Technical Bulletin.) Click on OK to return to the dcp\_copy dialog box.
3. Select the Search button that appears beside the Source file input field. Locate the folder and file you want to repair or compress. If you are currently working on the file you want to repair or compress, select the swap file (.dc\$) as the source file.
4. Choose the Search button following the Target file input field or type in a path and name for the new file to be created from the source file. (The default extension is currently .dc6).
5. Select the Options... button again if you want to refine the copy procedure. If you do not want to activate any of the options, go to step 6. Refer to the next section of this Technical Bulletin for details about the Options dialog box.
6. Click on START. Dcp\_copy copies all system variables, system attributes, symbol files, layers, views, etc. to the new file.

## The Options Dialog Box

You can further refine the dcp\_copy procedure by activating features in the Options dialog box.



- Only copy following layers – Select the layers you want from the drop-down list.
- Default drawing – Select the file you want to use as a default when you create a new drawing file. Click on the Search button to locate the folder and default drawing file you want to use. This file must be in the DC6 format.
- Notify (Warning level) List only serious drawing errors – these errors will appear in the list in the dcp\_copy dialog box.
- Notify (Warning level) List all drawing errors – these errors will appear in the list in the dcp\_copy dialog box.
- Confirm each layer - activate if you want to confirm each layer that is copied from the old file to the new one.
- Suppress symbol attributes – symbol attributes will not be copied.
- Ignore settings and views – settings and views will not be copied.
- Suppress system attributes – system attributes will not be copied.
- Suppress entity attributes – entity attributes will not be copied.
- Purge unreferenced symbols – performs a symbol purge on the fly.

---

You can manually purge symbols from within a dc+ drawing by selecting Directory menu, Templates, and Clear.

- Abort with warning if errors in data chains are detected – dcp\_copy will abort if it encounters such errors.
- Reset -returns all options to their default state.
- Cancel – aborts any changes you made on the Options dialog box.

- OK - accepts the current settings.