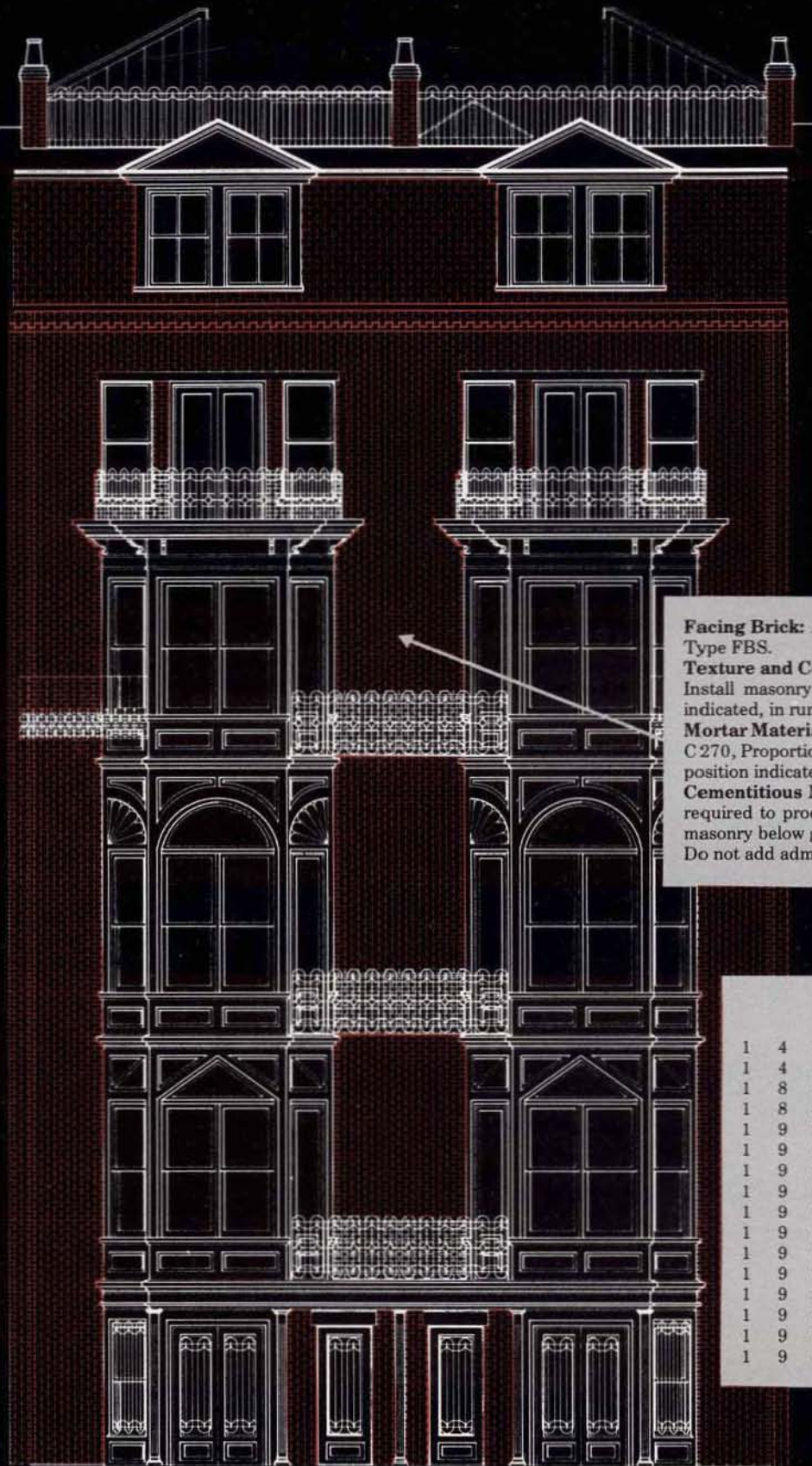


# DataMERGE



**Facing Brick:** ASTM C 216, Grade SW, and as follows:  
Type FBS.

**Texture and Color:** Match Architect's sample.

Install masonry units in the bond pattern indicated, or if none is indicated, in running bond.

**Mortar Materials and Mixes:** Provide mortar complying with ASTM C 270, Proportion Specification, for materials and mortar types of composition indicated below:

**Cementitious Material:** Masonry cement, white or natural color as required to produce mortar color indicated. Use Type M mortar for masonry below grade and in contact with earth.  
Do not add admixtures unless otherwise indicated.

## Cost Comparison

				Estimate	Bid price	As-built
1	4	4A	001	3110.00	2288.00	1990.56
1	4	4A	002	1550.00	1550.00	1592.00
1	8	8B	001	2045.54	2045.54	1998.00
1	8	8C	001	3607.24	3607.24	3545.96
1	9	9A	001	630.00	630.00	636.00
1	9	9A	003	180.00	150.00	151.00
1	9	9A	004	270.00	225.00	224.25
1	9	9B	001	1380.00	1140.00	1140.00
1	9	9B	002	940.00	760.00	736.00
1	9	9C	001	2000.00	1640.00	1500.00
1	9	9C	002	1110.00	915.00	1052.25
1	9	9C	003	11100.00	9180.00	9200.00
1	9	9E	001	4425.00	3645.00	3645.00
1	9	9E	002	3600.00	2960.00	2850.50
1	9	9E	003	200.00	160.00	160.00
1	9	9E	004	1640.00	1360.00	1360.00



DataMERGE is the first PC-based program that combines all the elements of building design and construction into a single database. Used in tandem with DataCAD, DataMERGE lets you design, specify materials, estimate costs, compare bids and track construction expenditures in one easy-to-use system. No other product gives you such complete control of a project from concept to completion. Just look what DataMERGE can do:

**Creates specifications automatically from DataCAD drawings.** You can specify all materials necessary for your project. It saves money by reducing the time required for writing specifications.

**Automatically estimates the cost of materials and labor.** It will increase your estimating accuracy because of the direct CAD takeoff.

**Changes specifications and estimates as you change the design.** Whatever revisions you make to your plans are automatically reflected in the specifications and estimates. It eliminates the need for time consuming recalculations.

**Breaks out specifications and estimates on a room by room basis.** Giving the builder an exact

description of the materials you want to use.

**Reads all ASCII files.** So you can use AIA, CSI or in-house specifications.

**Compares up to 99 bids.** Compares bids in total and item-by-item. Also calculates an average of all bids.

**Computes ideal bid.** Takes the lowest bid on each item and compiles a lowest possible bid. Use it to negotiate contracts.

**Checks contractor's math.** Automatically verifies the accuracy of each bid.

**Tracks construction costs.** Alerts you when actual costs are exceeding project budgets. Final costs can be used to update your existing database.

**Helps manage building assets.** Tracks furniture and equipment room-by-room.

**Delineates leasable and non-leasable areas.** Important information to have when setting rental rates.

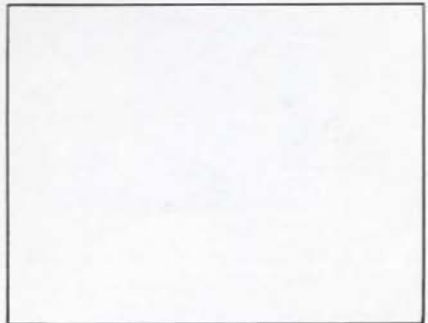
**Easy to learn, easy to use.** DataMERGE was written by architects, so it's design oriented. You'll catch on quickly.

**Written in a fast, efficient PC language.** Many specification and estimating software products were originally written for mainframes and adapted for PC use. DataMERGE was written expressly for personal computers, so it runs faster and is more memory efficient.

**Works without exchange files.** Unlike other CAD/database links, DataMERGE requires no time-consuming exchange files to link with DataCAD.

*Runs on IBM AT and compatibles under MS DOS. See your authorized dealer for a list of compatible products.*

*Suggested retail price: \$3,495.00*



## DataMERGE

From the Architects of Microstructure.

1-800-722-3983

1-804-295-2600 in Virginia

### The DataCAD - DataMERGE Link

